

ELESTAT- epinastine hydrochloride solution/ drops
Allergan, Inc.

HIGHLIGHTS OF PRESCRIBING INFORMATION

These highlights do not include all the information needed to use ELESTAT[®] safely and effectively. See full prescribing information for ELESTAT[®].

ELESTAT[®] (epinastine HCl ophthalmic solution) 0.05%

Initial U.S. Approval: 2003

----- **INDICATIONS AND USAGE** -----

ELESTAT[®] is an H₁ histamine receptor antagonist indicated for the prevention of itching associated with allergic conjunctivitis. (1)

----- **DOSAGE AND ADMINISTRATION** -----

The recommended dosage is one drop in each eye twice a day. (2)

----- **DOSAGE FORMS AND STRENGTHS** -----

Ophthalmic solution containing 0.5 mg/mL epinastine HCl. (3)

----- **CONTRAINDICATIONS** -----

None (4)

----- **WARNINGS AND PRECAUTIONS** -----

- To minimize the risk of contamination, do not touch dropper tip to any surface. Keep bottle tightly closed when not in use. (5.1)
- ELESTAT[®] should not be used to treat contact lens-related irritation. (5.2)
- Remove contact lenses prior to instillation of ELESTAT[®]. (5.2)

----- **ADVERSE REACTIONS** -----

The most common ocular adverse reactions (incidence occurring in approximately 1% - 10% of ELESTAT[®] treated eyes) were burning sensation in the eye, folliculosis, hyperemia, and pruritus. The most common non-ocular adverse reactions, occurring in 10% of ELESTAT[®] treated eyes, were infection (cold symptoms and upper respiratory infections). (6.1)

To report SUSPECTED ADVERSE REACTIONS, contact Allergan at 1-800-433-8871 or the FDA at 1-800-FDA-1088 or www.fda.gov/medwatch.

See 17 for PATIENT COUNSELING INFORMATION.

Revised: 12/2011

FULL PRESCRIBING INFORMATION: CONTENTS*

1 INDICATIONS AND USAGE

2 DOSAGE AND ADMINISTRATION

3 DOSAGE FORMS AND STRENGTHS

4 CONTRAINDICATIONS

5 WARNINGS AND PRECAUTIONS

5.1 Contamination of Tip and Solution

5.2 Use with Contact Lenses

5.3 Topical Ophthalmic Use Only

6 ADVERSE REACTIONS

6.1 Clinical Studies Experience

6.2 Postmarketing Experience

8 USE IN SPECIFIC POPULATIONS

8.1 Pregnancy

8.3 Nursing Mothers

8.4 Pediatric Use

8.5 Geriatric Use

11 DESCRIPTION

12 CLINICAL PHARMACOLOGY

12.1 Mechanism of Action

12.3 Pharmacokinetics

13 NONCLINICAL TOXICOLOGY

13.1 Carcinogenesis, Mutagenesis, Impairment of Fertility

14 CLINICAL STUDIES

16 HOW SUPPLIED/STORAGE AND HANDLING

17 PATIENT COUNSELING INFORMATION

17.1 Sterility of Dropper Tip

17.2 Concomitant Use of Contact Lenses

17.3 Topical Ophthalmic Use Only

* Sections or subsections omitted from the full prescribing information are not listed.

FULL PRESCRIBING INFORMATION

1 INDICATIONS AND USAGE

ELESTAT[®] ophthalmic solution is indicated for the prevention of itching associated with allergic conjunctivitis.

2 DOSAGE AND ADMINISTRATION

The recommended dosage is one drop in each eye twice a day.

Treatment should be continued throughout the period of exposure (i.e., until the pollen season is over or until exposure to the offending allergen is terminated), even when symptoms are absent.

3 DOSAGE FORMS AND STRENGTHS

Solution containing 0.5 mg/mL epinastine HCl

4 CONTRAINDICATIONS

None

5 WARNINGS AND PRECAUTIONS

5.1 Contamination of Tip and Solution

Patients should be instructed to avoid allowing the tip of the dispensing container to contact the eye, surrounding structures, fingers, or any other surface in order to avoid contamination of the solution by common bacteria known to cause ocular infections. Serious damage to the eye and subsequent loss of vision may result from using contaminated solutions.

Bottle should be kept tightly closed when not in use.

5.2 Use with Contact Lenses

Patients should be advised not to wear a contact lens if their eye is red. **ELESTAT**[®] ophthalmic solution should not be used to treat contact lens-related irritation.

The preservative in **ELESTAT**[®], benzalkonium chloride, may be absorbed by soft contact lenses.

Contact lenses should be removed prior to instillation of **ELESTAT**[®] ophthalmic solution and may be reinserted after 10 minutes following its administration.

5.3 Topical Ophthalmic Use Only

ELESTAT[®] is for topical ophthalmic use only and not for injection or oral use.

6 ADVERSE REACTIONS

6.1 Clinical Studies Experience

Because clinical studies are conducted under widely varying conditions, adverse reaction rates observed in the clinical studies of a drug cannot be directly compared to rates in the clinical studies of another drug and may not reflect the rates observed in practice.

The most frequently reported ocular adverse reactions occurring in approximately 1-10% of patients were burning sensation in the eye, folliculosis, hyperemia, and pruritus.

The most frequently reported non-ocular adverse reactions were infection (cold symptoms and upper respiratory infections), seen in approximately 10% of patients, and headache, rhinitis, sinusitis, increased cough, and pharyngitis, seen in approximately 1 - 3% of patients.

Some of these reactions were similar to the underlying disease being studied.

6.2 Postmarketing Experience

The following reactions have been identified during postmarketing use of **ELESTAT**[®] in clinical practice. Because they are reported voluntarily from a population of unknown size, estimates of frequency cannot be made. The reactions, which have been chosen for inclusion due to either their seriousness, frequency of reporting, possible causal connection to **ELESTAT**[®], or a combination of these factors, include: lacrimation increased.

8 USE IN SPECIFIC POPULATIONS

8.1 Pregnancy

Teratogenic Effects
Pregnancy Category C

In an embryofetal developmental study in pregnant rats, maternal toxicity with no embryofetal effects was observed at an oral dose that was approximately 150,000 times the maximum recommended ocular human dose (MROHD) of 0.0014 mg/kg/day on a mg/kg basis. Total resorptions and abortion were observed in an embryofetal study in pregnant rabbits at an oral dose that was approximately 55,000 times the MROHD. In both studies, no drug-induced teratogenic effects were noted.

Epinastine reduced pup body weight gain following an oral dose to pregnant rats that was approximately 90,000 times the MROHD.

There are, however, no adequate and well-controlled studies in pregnant women. Because animal reproduction studies are not always predictive of human response, **ELESTAT**[®] ophthalmic solution should be used during pregnancy only if the potential benefit justifies the potential risk to the fetus.

8.3 Nursing Mothers

A study in lactating rats revealed excretion of epinastine in the breast milk. It is not known whether this drug is excreted in human milk. Because many drugs are excreted in human milk, caution should be exercised when **ELESTAT**[®] ophthalmic solution is administered to a nursing woman.

8.4 Pediatric Use

Safety and effectiveness in pediatric patients below the age of 2 years have not been established.

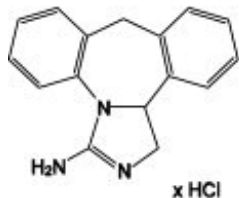
8.5 Geriatric Use

No overall differences in safety or effectiveness have been observed between elderly and younger patients.

11 DESCRIPTION

ELESTAT[®] (epinastine HCl ophthalmic solution) 0.05% is a clear, colorless, sterile isotonic solution containing epinastine HCl, an antihistamine and an inhibitor of histamine release from the mast cell for topical administration to the eyes.

Epinastine HCl is represented by the following structural formula:



$C_{16}H_{15}N_3HCl$ Mol. Wt. 285.78

Chemical Name:

3-Amino-9,13b-dihydro-1H-dibenz[c,f]imidazo[1,5-a]azepine hydrochloride

Each mL contains: Active: Epinastine HCl 0.05% (0.5 mg/mL) equivalent to epinastine 0.044% (0.44 mg/mL); **Preservative:** Benzalkonium chloride 0.01%; **Inactives:** Edetate disodium; purified water; sodium chloride; sodium phosphate, monobasic; and sodium hydroxide and/or hydrochloric acid (to adjust pH). **ELESTAT[®]** has a pH of approximately 7 and an osmolality range of 250 to 310 mOsm/kg.

12 CLINICAL PHARMACOLOGY

12.1 Mechanism of Action

Epinastine is a topically active, direct H_1 -receptor antagonist and an inhibitor of the release of histamine from the mast cell. Epinastine is selective for the histamine H_1 -receptor and has affinity for the histamine H_2 -receptor. Epinastine also possesses affinity for the α_1 , α_2 -, and 5-HT₂-receptors.

12.3 Pharmacokinetics

Fourteen subjects, with allergic conjunctivitis, received one drop of **ELESTAT[®]** ophthalmic solution in each eye twice daily for 7 days. On day 7, average maximum epinastine plasma concentrations of 0.04 ± 0.014 ng/ml were reached after about two hours indicating low systemic exposure. While these concentrations represented an increase over those seen following a single dose, the day 1 and day 7 Area Under the Curve (AUC) values were unchanged indicating that there is no increase in systemic absorption with multiple dosing. Epinastine is 64% bound to plasma proteins. The total systemic clearance is approximately 56 L/hr and the terminal plasma elimination half-life is about 12 hours. Epinastine is mainly excreted unchanged. About 55% of an intravenous dose is recovered unchanged in the urine with about 30% in feces. Less than 10% is metabolized. The renal elimination is mainly via active tubular secretion.

13 NONCLINICAL TOXICOLOGY

13.1 Carcinogenesis, Mutagenesis, Impairment of Fertility

In 18-month or 2-year dietary carcinogenicity studies in mice or rats, respectively, epinastine was not carcinogenic at doses up to 40 mg/kg [approximately 30,000 times higher than the MROHD, assuming 100% absorption in humans and animals].

Epinastine in newly synthesized batches was negative for mutagenicity in the Ames/*Salmonella* assay and *in vitro* chromosome aberration assay using human lymphocytes. Positive results were seen with early batches of epinastine in two *in vitro* chromosomal aberration studies conducted in 1980s with human peripheral lymphocytes and with V79 cells, respectively. Epinastine was negative in the *in vivo* clastogenicity studies, including the mouse micronucleus assay and chromosome aberration assay in Chinese hamsters. Epinastine was also negative in the cell transformation assay using Syrian hamster embryo cells, V79/HGPRT mammalian cell point mutation assay, and *in vivo/in vitro* unscheduled DNA synthesis assay using rat primary hepatocytes.

Epinastine had no effect on fertility of male rats. Decreased fertility in female rats was observed at an oral dose up to approximately 90,000 times the MROHD.

14 CLINICAL STUDIES

Epinastine HCl 0.05% has been shown to be significantly superior to vehicle for improving ocular itching in patients with allergic conjunctivitis in clinical studies using two different models: (1) conjunctival antigen challenge (CAC) where patients were dosed and then received antigen instilled into the inferior conjunctival fornix; and (2) environmental field studies where patients were dosed and evaluated during allergy season in their natural habitat. Results demonstrated a rapid onset of action for epinastine HCl 0.05% within 3 to 5 minutes after conjunctival antigen challenge. Duration of effect was shown to be 8 hours, making a twice daily regimen suitable. This dosing regimen was shown to be safe and effective for up to 8 weeks, without evidence of tachyphylaxis.

16 HOW SUPPLIED/STORAGE AND HANDLING

ELESTAT[®] (epinastine HCl ophthalmic solution) 0.05% is supplied sterile in opaque white LDPE plastic bottles with dropper tips and white high impact polystyrene (HIPS) caps as follows:

5 mL in 10 mL bottle NDC 0023-9201-05

Storage: Store at 15°-25°C (59°-77°F). Keep bottle tightly closed and out of the reach of children.

17 PATIENT COUNSELING INFORMATION

17.1 Sterility of Dropper Tip

Patients should be advised not to touch dropper tip to any surface, as this may contaminate the contents (see **WARNINGS AND PRECAUTIONS, 5.1**).

17.2 Concomitant Use of Contact Lenses

Patients should be advised not to wear a contact lens if their eye is red. Patients should be advised that **ELESTAT**[®] should not be used to treat contact lens-related irritation. Patients should also be advised to remove contact lenses prior to instillation of **ELESTAT**[®]. The preservative in **ELESTAT**[®], benzalkonium chloride, may be absorbed by soft contact lenses. Lenses may be reinserted after 10 minutes following administration of **ELESTAT**[®].

17.3 Topical Ophthalmic Use Only

For topical ophthalmic administration only.

Rx only

© 2012 Allergan, Inc.

Irvine, CA 92612, U.S.A.

Allergan corporate signature logo is a registered trademark of Allergan, Inc.

ELESTAT is a registered trademark of Boehringer Ingelheim International GmbH and is licensed to Allergan, Inc.

Made in the U.S.A.



72499US10

ALLERGAN NDC 0023-9201-05

Elestat[®]

(epinastine HCl

ophthalmic solution) 0.05%

5 mL Rx only sterile



ALLERGAN

NDC 0023-9201-05

Elestat[®]

(epinastine HCl

ophthalmic solution) 0.05%

Rx Only

5 mL sterile



ELESTAT

epinastine hydrochloride solution/ drops

Product Information

Product Type	HUMAN PRESCRIPTION DRUG	Item Code (Source)	NDC:0023-9201
Route of Administration	OPHTHALMIC		

Active Ingredient/Active Moiety

Ingredient Name	Basis of Strength	Strength
epinastine hydrochloride (UNII: GFM415S5XL) (epinastine - UNII:Q13WX941EF)	epinastine hydrochloride	0.5 mg in 1 mL

Inactive Ingredients

Ingredient Name	Strength
benzalkonium chloride (UNII: F5UM2KM3W7)	
edetate disodium (UNII: 7FLD91C86K)	
water (UNII: 059QF0K00R)	
sodium chloride (UNII: 451W47IQ8X)	
sodium phosphate, monobasic (UNII: 3980JH2SW)	
sodium hydroxide (UNII: 55X04QC32I)	
hydrochloric acid (UNII: QTT17582CB)	

Packaging

#	Item Code	Package Description	Marketing Start Date	Marketing End Date
1	NDC:0023-9201-05	1 in 1 CARTON	01/19/2004	
1		5 mL in 1 BOTTLE, DROPPER; Type 0: Not a Combination Product		

Marketing Information

Marketing Category	Application Number or Monograph Citation	Marketing Start Date	Marketing End Date
NDA	NDA021565	01/19/2004	

Labeler - Allergan, Inc. (144796497)

Establishment

Name	Address	ID/FEI	Business Operations
Allergan, Inc.		362898611	MANUFACTURE(0023-9201)

Revised: 1/2012

Allergan, Inc.